

## Alkaline-resistant Protein A(Type 2)

**Cat. No.** Protein A-3904S    **Lot. No.** (See product label)

### SPECIFICATION

**Product Overview**

Protein A is A cell wall protein secreted by *Staphylococcus aureus*, also known as Staphylococcal Protein A(SPA), Natural protein A is mainly composed of three functional regions: signal peptide, 5 antibody binding domains and cell wall peptidoglycan binding domains. The most studied and applied region is the 5 antibody binding domains with antibody binding functions. Alkali-resistant protein A(type 2) modified the antibody binding domain in natural protein A, and the modified alkali-resistant protein A(type 2) significantly improved the alkali-resistant property. Moreover, cysteine was added at the end of the amino acid sequence to enable sulfhydryl directed coupling, which was suitable for preparing new alkali-resistant protein A microsphere packing, which allowed 0.1-1.0M NaOH to be cleaned in place.

**Species**                      *Staphylococcus aureus*

**Source**                        *E.coli*

**Tag**                              Non

**Form**                          5mM PB, pH7.4

**Molecular Mass**            40.8kDa

**Purity**                        ≥95%(SDS-PAGE)

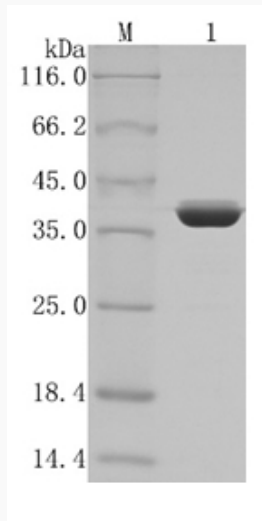
**Storage**                      Freeze-dried powder -20±5°C, after dissolution to avoid repeated freeze-thaw.

 Tel: 1-631-559-9269    1-516-512-3133

 Email: [info@creative-biomart.com](mailto:info@creative-biomart.com)     Fax: 1-631-938-8127

 45-1 Ramsey Road, Shirley, NY 11967, USA

**SDS-PAGE**



 Tel: 1-631-559-9269 1-516-512-3133

 Email: [info@creative-biomart.com](mailto:info@creative-biomart.com)  Fax: 1-631-938-8127

 45-1 Ramsey Road, Shirley, NY 11967, USA